

The Starline logo consists of the word "Starline" in a bold, white, sans-serif font, followed by a registered trademark symbol (®). Below it, in a smaller font, is the text "A brand of" followed by the Legrand logo (a square with a stylized 'L') and the word "legrand" in a lowercase, sans-serif font.

Starline
A brand of  legrand

Flexible, Customizable
Power Solutions for
Mission Critical Success

MISSION CRITICAL BROCHURE



Reliable, Flexible, & Customizable Critical Power

By their very nature, mission-critical and data center facilities are susceptible to downtime. With **Starline Track Busway** and **XCP High Power Busbars**, power distribution has been revolutionized.

Starline Track Busway's simple, versatile, and economical solution for supplying power is unique because critical loads can be tapped instantly at any location, without any downtime.

For higher power applications, Starline XCP High Power Busbars provide unparalleled safety, performance, and flexibility. With rising mains and a full range of customizable solutions, this means transporting and distributing energy has never been easier.



Starline Track Busway



XCP High Power Busbars



Starline Track Busway

OVERHEAD POWER DISTRIBUTION MADE SIMPLE

Starline Track Busway systems power many of today's largest mission-critical facilities. Providing overhead power distribution means no jungle of cables and whips under the floor obstructing air-flow. The continuous access slot along the bus gives data centers the power to expand or reconfigure operations easily, without sacrificing downtime.

THE MOST CRITICAL DECISION FOR MISSION-CRITICAL FACILITIES

By their very nature, mission-critical and data center facilities are extremely sensitive to downtime. With Starline Track Busway, power distribution has been revolutionized. This simple, versatile, and economical solution for supplying power is unique because Starline Track Busway can be tapped instantly at any location without any downtime.

✓ **Having Starline Track Busway power your mission-critical facilities gives you the advantage:**

- Field-proven in data centers for over 30 years
- Plug-in units can be positioned at any point along the busway for maximum versatility
- Customization of plug-in units for any environment
- Easiest installation of plug-in units — just insert and turn
- No complicated mechanisms or levers
- Most reliable plug-in design with the least amount of electrical connections from busway to plug-in unit
- Interchangeable plugs for systems including: 250, 400, 600/630, 800, 1000, & 1200/1250 T5
- Multiple busway feed options: end, top, center — for installation flexibility
- Available in lengths up to 10 or 20 feet (3 or 6 meters) for faster installation



The Power of Simplicity

Ever-increasing demands on IT infrastructure confront data center owners and operators to keep pace. One solution has been to increase the power density within the facility. This continual cycle of increasing power requirements for the critical equipment in the racks and cabinets has translated into more and more cables under the raised-floor or overhead.

But Starline Track Busway is a self-contained system, so there is no jungle of wires to obstruct air flow, making it one of the most energy-efficient systems you can buy in today's mission-critical environment. Starline is modular, build-as-you-need, and equipped for high-density electrical distribution. And it's designed and rated to meet and exceed the rigorous reliability demands and thermal requirements of mission-critical facilities.

Starline also eliminates all the distribution panels associated with traditional systems, so changes and additions can be easily made without shutting off power. The all-in-one, self-contained plug-in units can also be inserted anywhere along the busway in almost any NEMA configuration and have fewer mechanical joints for reliability and efficiency.



✓ **Reduced Facility Construction Costs**

- Labor savings mean installation is less expensive
- Eliminates costly change orders and outside labor costs for electrical specialists
- Lower cost of ownership

✓ **Faster Installation**

- Building projects are up and running faster
- Add, remove or relocate power easily and quickly with no downtime

✓ **Flexibility for the Future**

- Plug-in units can be disconnected and connected without de-energizing the busway
- Requires no routine maintenance

✓ **More Choices**

- Customizable for any environment, space or power requirement
- Designed specifically for mission-critical and data center environments — T5 plug-in units are compatible with all T5 systems
- Scalable, reusable, and customizable lengths, sizes, colors and configurations to meet your unique specifications

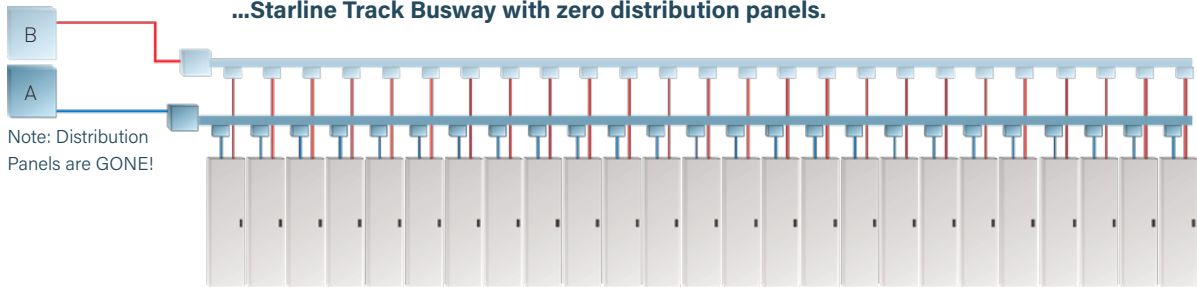
✓ **Field Services**

- On-site support and system startup
- Ongoing support plans and warranty programs
- Metering services and integration
- Engineering studies
- Load bank testing and equipment rentals

Compare the confusion of traditional RPP/PDUs with whips under the floor to...



...Starline Track Busway with zero distribution panels.



TRACK BUSWAY SYSTEM RATINGS

Ampacity	160	225	250	400	600/630	800	1000	1200/1250
Rated Voltage	415-600V	415-600V	415-600V	415-600V	415-600V	415-600V	415-600V	415-600V
Conductor Type	Copper	Copper	Copper	Copper	Copper	Copper Contact	Copper Contact	Copper Contact
Frequency Ratings	50/60Hz	50/60Hz	50/60Hz	50/60Hz	50/60Hz	50/60Hz	50/60Hz	50/60Hz
Testing Criteria	UL 857/ IEC 61439	UL 857/ IEC 61439	UL 857/ IEC 61439	UL 857/ IEC 61439	UL 857/ IEC 61439	UL 857/ IEC 61439	UL 857/ IEC 61439	UL 857/ IEC 61439
Housing Material	Extruded Aluminum	Extruded Aluminum	Extruded Aluminum	Extruded Aluminum	Extruded Aluminum	Extruded Aluminum	Extruded Aluminum	Extruded Aluminum
System Weight Straight sections based on 4 pole	0.3m (1ft) = 1.18kg (2.6lbs)	0.3m (1ft) = 1.54kg (3.4lbs)	0.3m (1ft) = 1.86kg (4.1lbs)	0.3m (1ft) = 4.31kg (9.5lbs)	0.3m (1ft) = 5.21kg (11.4lbs)	0.3m (1ft) = 8.89kg (19.6lbs) CU/AL 0.3m (1ft) = 5.52kg (11.5lbs)	0.3m (1ft) = 9.53kg (21lbs)	0.3m (1ft) = 9.53kg (21lbs)
Support Distance	Max distance 3m (10 ft)	Max distance 3m (10 ft)	Max distance 3m (10 ft)	Max distance 3m (10 ft)	Max distance 3m (10 ft)	Max distance 3m (10 ft)	Max distance 3m (10 ft)	Max distance 3m (10 ft)
Available lengths	Up to 6m (20 ft)	Up to 6m (20 ft)	Up to 6m (20 ft)	Up to 6m (20 ft)	Up to 6m (20 ft)	Up to 3m (10ft)	Up to 3m (10ft)	Up to 3m (10ft)



Starline XCP High Power Busbars

HIGH POWER TRANSPORT AND DISTRIBUTION

Starline's Xtra-compact (XCP) busbar product line is the ideal solution for the transport and distribution of energy in data centers. Ranging from 630-6300 amps, the high power busbar delivers up to an IP65 degree of protection. The XCP product line provides exceptional safety, performance, and flexibility for the most demanding critical power applications.



SAFETY

Tested and manufactured per IEC 61439-1 & 6, the XCP product line is designed to provide the highest safety levels from all aspects of design and installation. Features such as fire and seismic resistance, high short-circuit ratings, excellent ingress protection along with superior insulation technology, help ensure that your critical operations team is always safe.



PERFORMANCE

XCP provides reliability and cost-saving through its innovative design. The use of high-end materials and insulation, provide industry-leading ambient temperature ratings, low losses, and negligible electromagnetic emissions, resulting in XCP's world-class performance.

FLEXIBILITY

The product is Xtra-compact, efficient, and easy to install with features and accessories that make planning and designing your critical infrastructure project easy. With both Standard (XCP-S) and High-Performance (XCP-HP) series, a current range of 630-6300 amps, copper or aluminum conductors, a full range of components and power connections, and tap-offs up to 1250 amps, the XCP product line can be configured for any project design, including multi-floor distribution.



NUMBER OF INTERNAL BARS OF XCP-S AND XCP-HP

RATED CURRENT	630A	800A	1000A	1250A	1600A	2000A	2500A	3200A	4000A	5000A	6300A
XCP-S Aluminum	SINGLE BAR configuration						DOUBLE BAR configuration			*	
XCP-S Copper	SINGLE BAR configuration						DOUBLE BAR configuration				*

RATED CURRENT	630A	800A	1000A	1250A	1600A	2000A	2500A	3200A	4000A	5000A	6300A
XCP-HP Aluminum	SINGLE BAR configuration						DOUBLE BAR configuration			*	
XCP-HP Copper	SINGLE BAR configuration						DOUBLE BAR configuration				*

*Triple bar

- 3, 4 or 5 conductors
- Up to 55 degree Celcius ambient temperature rating
- Low Electromagnetic emissions
- Energy Saving with best Total Cost of Ownership
- Maximum Strength
- High Short Circuit Ratings
- Up to IP65 rating, with IP55 standard
- Fire resistance to IEC 60331-1
- Seismic resistant
- Superior insulation technology

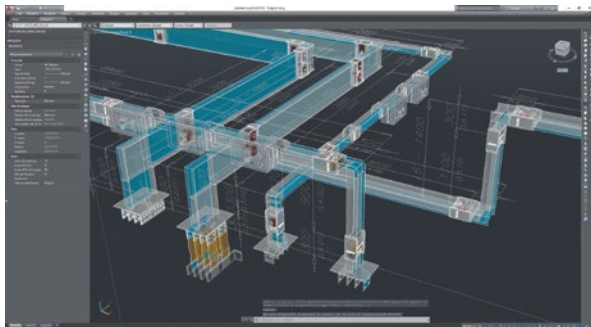
PSSL Software

PSSL is a proprietary software to support the design of Starline's XCP Busbar line. It transforms a graphic project into a list of materials (including accessories) to get an offer identical to the final design. PSSL is fully compatible with the latest versions of Autocad and Revit (and previous versions of both programs).

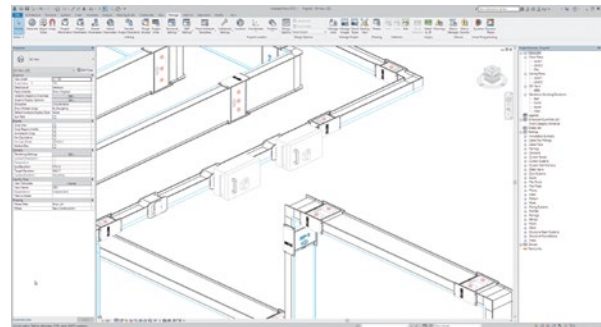
WITH THIS SOFTWARE YOU CAN:

- Draw the layout of the distribution system;
- Automatically obtain the material list (including accessories) from the drawing;
- Export the drawing to Autocad® and Revit®

With PSSL*, you can have a detailed list of the item codes that are found in this catalogue. Furthermore, the possibility to export the drawing to Autocad or Revit**, allows you to enter the paths of the busbar directly into the design of the building and to follow any design changes quickly and professionally.



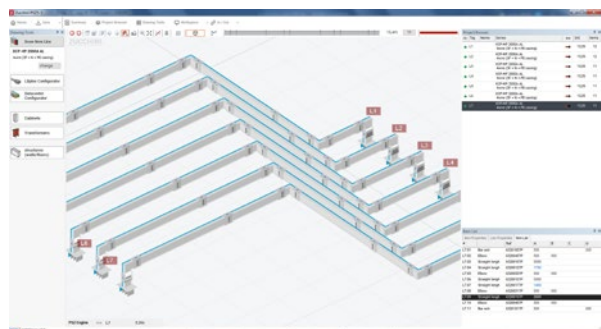
Example of a Drawing Export in Autocad



Example of the Drawing Export in Revit



Special UB Management Functions



Possibility to Manage Single Pieces through a New Algorithm Able to Optimize Routes

Cabinet Busway Series offers flexible power for server cabinets

The Cabinet Busway Series was specifically developed to offer flexible power to accommodate high density-power requirements within server cabinets. The series can provide up to 3-phase, 60 amp power through 480Vac. Installed in your cabinet or rack, each unit comes with a corded plug and modular backplane where you have the ability to select the plug-in units to meet the equipment needs of servers, storage arrays, network gear, or other devices installed in the cabinet. The Cabinet Busway Series also offers optional metering functionality for those interested in monitoring and improving energy efficiency.



Real-time monitoring for peak efficiency

Because of the market's growing need for energy efficiency, energy monitoring systems are more vital than ever. The Starline Critical Power Monitor (CPM) offers an enhanced monitoring package that will allow you to monitor, integrate and display more data center power information quickly and reliably.

THE STARLINE CPM OFFERS:

- End feed and branch circuit models
- Display and non-display versions
- Wired Ethernet and serial communications are standard, optional 802.11n Wi-Fi connectivity
- Ability to use both serial Modbus and Ethernet-based protocols simultaneously
- Daisy-chain Ethernet available
- Optional temperature monitoring
- Both Vac and DC versions available



✓ Temperature Monitor

- Real-time temperature data
- Eliminates need to periodically IR scan
- Data for end user analysis via webpage

✓ Corded CPM

- Add metering capabilities to your existing installation
- No modifications needed to existing infrastructure

✓ Retrofit CPM

- Cost-effective option for the addition or upgrade of existing Starline systems in the field
- Utilize existing end feed and/or installed plug-in units

✓ Factory Upgrade

- Add or upgrade metering capabilities to an existing installation
- Implementation can be accomplished on-site

STARLINE SERVICE OFFERINGS

Choice of Extended Warranty or Enhanced: Silver, Gold or Platinum Service Plans	Extended 1, 2, 3, 4 years	Silver 1, 2, 3, 4 years	Gold 1, 2, 3, 4 years	Platinum 2, 3, 4 years
Repair or replacement of defective parts throughout life of service agreement	•	•	•	•
24/7 technical support hotline	•	•	•	•
Visual inspection of meters		•	•	•
Visual inspection of all joints for visible gaps		•	•	•
Update firmware and verify all Starline CPMs		•	•	•
Includes travel and expenses		•	•	•
One (1) service site visit per year		•		
Two (2) service site visits per year			•	•
Thermal imaging of all plug-in units			•	•
Thermal imaging of all Busway joints			•	•
Thermal imaging of all end feed units			•	•
Detailed and fully executed thermography report			•	•
Online portal for test reports & documentation			•	•
Spare parts inventory management program				•

✓ Load Bank Testing and Equipment Rentals

- Factory trained and certified technicians will load bank test and commission busway
- Reliable source for load bank rental equipment delivered to the site when you need

✓ Meter Services

- Certified technicians will safely and efficiently program meters
- Technicians can integrate your CPM devices so that you can focus on operational goals

✓ Startup and System Certification

- Helps mitigate issues and risks associated with startup by proactively inspecting, testing and reporting on Starline products
- Upon successful completion of system startup, Starline's standard manufacturer's system warranty will be automatically extended in duration

✓ Engineering Studies (US ONLY)

- Allow for compliance to safety standards
- Engineers will provide facility electrical studies, recommend corrective actions or confirm your systems reliability and compliance with government and safety requirements

✓ On-Site Installation Support

- Confirm equipment delivery and quality
- Inspection of proper system installation
- Contractor training on best practices for installation

✓ On-Site Product Training

- Proven course curriculum is thorough and effective meeting Starline's rigorous installation and operational standards
- Improve operator safety and learn best practices to care for your product

Starline, a brand of Legrand, has been a leader in power distribution since 1924. The company's founders led the way for many new technologies in the power distribution equipment industry. Today, Starline continues to pave the way for safer, more innovative and more reliable electrical power distribution systems. Visit StarlinePower.com to learn more about our flexible power solutions.

Starline[®]
A brand of  **legrand**

NORTH AMERICAN HEADQUARTERS

168 Georgetown Road | Canonsburg, PA 15317 | USA | +1 800-245-6378

UK & NORTHERN EUROPE

Unit C Island Road | Reading RG2 0RP | UK | +44 (0) 1183-043180

ASIA PACIFIC REGION

16D Tuas Avenue 1 | #04-60/62 | JTC Space @ Tuas | Singapore 639536 | +65 6950-1247

StarlinePower.com

+1 724-597-7800 | +1 800-245-6378

04/22 V1287 US

