

Case Study



Washington County Fairgrounds eliminate hassle and minimize cost with use of Starline Track Busway

The Washington County Fairgrounds, which hosts the annual Washington County Agricultural Fair, spans 159 acres and is a community staple in Washington County Pennsylvania. In addition to the Agricultural Fair which lasts eight days and draws over 70,000 visitors, the Fairgrounds has six buildings that are frequently rented for events such as corporate dinners, exhibitions, receptions, and banquets.

Problem

Event rentals routinely required Washington County Fairground officials to transform buildings up to three times a week. Limited by hardwired power outlets, the widespread use of extension cords became a necessity. For its largest event of the year, the Agricultural Fair, the Fairgrounds had to accommodate the electrical requirements of over 2,400 exhibitors for the eight-day long festival.

One of the biggest problems Fairground officials faced were

the cinderblock walls in the buildings. In order to expand electrical access points within the halls, electricians had to anchor wall-mounted conduit and receptacles. To handle the increased power demands of the Agricultural Fair, two round-the-clock electricians were hired, amounting to thousands of dollars in cost over two to three weeks of service.

“[The electricians] came in a week before to run additional lines, and would be here the entire week of the fair,” said Wayne Hunnell, Secretary of the Board for the Fairgrounds. “We’d have to have them back in after the fair to remove lines and put things back in order because we didn’t need them running all over the place.”

Furthermore, the increased wiring and extension cords posed safety concerns for fair visitors, requiring tape and floor mats to eliminate the tripping hazards. “Over those 8 days, we’ll have around 75,000 people come through these halls and these buildings,” continued Hunnell.

StarlinePower.com

+1 724-597-7800 | +1 800-245-6378

01/20 (Published 04/19) F0900051

Starline
A brand of **Legrand**

“So, there is a tremendous amount of traffic. If we were running cords, we’d have to be taping those down or having those covered in some fashion.”

To accommodate the major growth in exhibitors and visitors to the Agricultural Fair, Fairground officials needed a power solution that would provide access points to highly trafficked areas without the hazard of extension cords and the added cost of contracted electricians.

Solution

The Washington County Fairgrounds installed 60 amp Starline Track Busway during the construction of its new buildings in the early 2000s. The overhead power distribution design consists of an aluminum shell with insulated copper conductors mounted on the two interior side walls.

The busway includes an open-access slot, allowing the insertion of customizable plug-in units where desired along the length of the system. This open-access design allowed Hunnell and other Fairground officials to place plug-in units where power was needed without having to power down the system.



Starline Track Busway 60 Amp Housing



“With the Starline busbar, it gave us the opportunity to put the power where we needed it without all of the electrical work.”

Wayne Hunnell
Secretary of the Board,
Washington County Fairgrounds

“We’ll have wedding receptions in here, they’ll bring in special decorations, lighting, and we won’t know where the caterers want to be,” said Hunnell. “Once they come in and (we) see where they’re set up, we need to drop a cord and provide power for there.”

Result

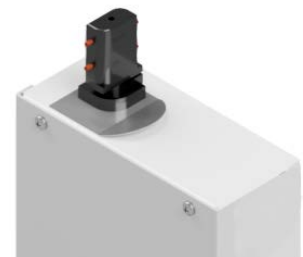
By choosing Starline Track Busway for its buildings, the Fairgrounds found a versatile and economical solution for handling its increased and varying power demands, removing the restrictions of hardwired power and the hiring of outside electricians. Furthermore, Starline Track Busway gave them the flexibility to rearrange power at any point in time.

“I would most certainly recommend the busway to other companies,” said Hunnell.

“It has obviously lowered our costs. It’s ease of use because someone like myself can do that. And it allows us to have the power right at the point it’s needed without the hazards of extension cords.”

About Starline

Starline is a global leader in power distribution equipment. For more than 30 years, Starline has provided data center, retail, health care, laboratory, higher education and industrial facilities with the most flexible, reliable and customizable power distribution systems on the market.



[VIEW THE VIDEO CASE STUDY](#)

StarlinePower.com

+1 724-597-7800 | +1 800-245-6378

01/20 (Published 04/19) F0900051

Starline
A brand of **Legrand**